

THE INFORMATION PALLET

*This Publication Is Another WG Home Grown Product
Compiled and Published By Melanie Dean*



PDL Becomes part of WG Family

In January 2017, PDL International Pte Ltd of Singapore entered into a Sales and Purchase Agreement for the acquisition of a parcel of shares in W&G.

The introduction of PDL as a substantial shareholder is an exciting opportunity for W&G who have worked closely in partnership in Fiji with PDL for the past 9 years, in their Trans Am Fiji Ltd – joint venture.

It will be very much “business as usual” with Laurie Mellsop being asked to stay on as Chairman and Dave Aidney as Managing Director.

Peter Drysdale’s Award at Government House

Director Peter Drysdale has received another national award for his service to the Fiji community- to add to the list which now includes;

Officer of the Order of Fiji (OOF)

Member of the Order of Fiji (MOF)
Member of the Order of Australia (AM)
Rotary International- Service Above Self Award

Peter has been building cyclone - safe homes for poor families in western Fiji for 32 years. He reports zero damage to all 962 homes after hurricane Winston in 2016. A total of 4330 people have been housed, and provided water tanks and living essentials. A house is built about every 12 days.

Peter founded the Model Towns Charitable Trust and the Trust now employs 39 carpenters and skilled technicians and 9 administration and community development specialists. A total of 1920 volunteers have served at Koroipita .

The first model town is at Koroipita near Lautoka has been funded by New Zealand aid, and Rotary with 231 houses- and they are planning a replication.

The model town concept including a sophisticated community development programme is critically important for the management of rural / urban drift - and for the future settlement of climate change refugees. There is presently 6970 people applying for a home at Koroipita and there is one vacant house !



Inside this issue

- Air NZ Cargo award
- Matson Agency meeting
- PDL becomes part of our W&G family
- PIL’s 50th Anniversary
- Edi Cargowise change over to Soft-link
- Fiji as our Hub of the Pacific – survives Biosecurity protocols
- Our heavy haulage experts – on the move
- PIL’s new South Pacific service & the appointment of Transam as PIL’s Fiji Agent
- Hamburg Sud sale to Maersk
- W&G Genera HACCP Accreditation
- Mike attends the Los Angeles Film Festival
- Rugby Icon Michael Jones Humbled By Knighthood
- 2017 Mid Year Review
- Logwin / W&G combine to help manage the logistics for Krones new Production Line at Coca Cola.
- Lautoka Container park gets an extreme make over

Shanghai Port is Busy When it Comes to Containers -So busy that it’s the busiest container port in the world, processing 29 million annually. That’s a lot compared to the United States number one port at Long Beach that processes around 6.5 million every year.

PIL/PDL launches new Asia/Fiji Direct Service

This new exciting service that links Asia to Fiji started from 28th February 2017.

PIL/PDL has deployed 3 x 1100 container vessels and offer market leading transit times between China and / Suva / Lautoka and Majuro direct. It is a fixed frequency of every 2 weeks directly calling Lautoka and Suva. Fiji importers and exporters now have a great opportunity to springboard their products directly into Fiji without having to hub it over NZ.

This is a fast and hassle free service. For Fijian exporters, this service opens up the PNG markets as the vessels call into PNG after Fiji. We open up gateway markets for our exporters to exploit, given the MSG agreements in place. We are hoping that the Fijian exporters take full advantage of the FIJI to PNG trade.

Below are the service rotations, both same now with no Lae northbound.

Loop 1 : Nansha – Gaolan – Hong Kong – Shekou – Lae – Honiara – Noumea – Suva – Lautoka – Majuro – Kosrae - Nansha

Loop 2 : Nansha – Gaolan – Hong Kong – Shekou – Lae – Honiara – Noumea – Suva – Lautoka – Majuro – Kosrae – Nansha



Contact Transam Fiji's Customer Care team for more information on ph: 3306241... We thank you for your continued support.

Expanding Depot Capacity in Lautoka

Geology can be seen as a study of pressure and time. The ebb and flow of commerce follows the same path, today WG and Punjas have realized that we can better use our land at Navutu for mutual advantage .

The plan is to build a greater Container Depot, that is in line with International standards, capable of storing over 2,000 containers and built with a long term view. This depot will serve all WG customers and shipping lines.

We also plan to build a Customs bonded area as well as a storage facility for our subsidiary JV company WG Genera which is growing fast

WG and Punjas are neighbors in terms of the properties we own and the partnership is a positive move in the right direction. There is room to expand the depot as trade increases .



Each year around 500,000 shipping containers are abandoned and are re-purposed for other uses such as building homes.

PACIFIC INTERNATIONAL LINES (PIL) TURNS 50

Dave Aidney was honoured to be invited to Singapore in mid-March to attend PIL's 50th Anniversary celebrations which was held at the Ritz Carlton Hotel and attended by over 500 of PIL's worldwide Agents.

As many in the Shipping Industry grapple with one of the longest and deepest downturns in international shipping – PIL is set to add 12 new container ships to its current fleet of 180, expanding its overall capacity to 500,000 TEU's by the end of 2018.



PIL is one of the largest private ship-owners in South – East Asia and the 15th biggest container shipping line globally, employing 18,000 staff.

Mr. Teo Siong Seng – MD for PIL said that the last 5 to 10 years had been very difficult with the last year being the worst having witnessed “5 weddings and a funeral.”

He was referring to the flurry of mergers and acquisitions that have taken place including: CMA CGM's \$3.38b buy out of Singapore's Neptune Orient Lines and the bankruptcy of South Korea's Hanjin Shipping as the funeral.

Mr. Teo is optimistic the shipping industry will see better days ahead and that a supply and demand equilibrium could come in to play by next year. He is also excited about their recent investment in W&G which will strengthen their presence in the Pacific and will help promote their new South Pacific service.

Maersk Line and Hamburg Sud sale and purchase agreement approved

“On 1 December 2016, Maersk Line announced its intention to acquire Hamburg Süd, the German container shipping line, and on 14 March 2017, Maersk Line announced the signing of a sale and purchase agreement with the Oetker Group, owner of Hamburg Süd”.

The acquisition is believed to be around EUR 3.7 billion on a cash and debt-free basis. What this merger means for W&G remains to be seen—for example whether both brands will continue to operate separately in Fiji is not apparent at this stage.

What we can ascertain however, from the public statement by Maersk is that they intend to keep both brands separate and allow HamburgSud full brand responsibility.

On the acquisition... *“Maersk Line and Hamburg Süd will have a total container capacity of around 3.9 million TEU (3.3 million TEU) and an 18.7% (16.0%) global capacity share (Alphaliner per 24 April 2017). The combined fleet will consist of 743 container vessels”.*

“Maersk Line expects to close the transaction by the end of 2017. Until then, Hamburg Süd and Maersk Line will continue business as usual as separate and independent companies”.



“Cap San Nicolas” in the South China Sea.

2017- Mid Year Review



Mr. Dave Aidney, Managing Director in his opening message stated that *“it’s been a while since there was a mid-year review and this platform brings about the opportunity to get everyone together to focus on challenges and opportunities faced by each unit of the company.”*

Emerging managers and supervisors had heard about mid-year review and its compelling purpose. It has created a more sophisticated management process for them and they found it an eye opener. According to Fawziyah Ali, Senior Credit Officer, *“Mid-Year Review to me was really helpful as we got to share*

ideas of what is happening around us.” The forum affectively addressed the strength, opportunities and challenges for each unit. In addition, the discussion was around expectations for the next six months and highlighted achievable goals. Mr. Edward Yuen, Chief Operating Officer emphasizes that, *“As a service provider, customers are important to us and dealing with their problems during our business transaction, needs to be made a priority to prevent reputational damage.”*

At team building exercise was part of the agenda where managers and supervisors raised their innovative ideas, demonstrated their leadership skills. This also helped the team to strengthen their connections.



Other topics raised by Mr. Murgessan Pillay, Chief Financial Officer, included *“Data Governance or management, Procurement Efficiencies, Credit Control Management, Financial Control Management, Capacity Building and Invoicing Issues as critical elements of our business.”*

Mr. Jitendra Singh, IT Manager, highlighted the recent global spread of unprecedented ransomware attacks and reason why it is important to employ enhanced protect for our information systems and personal devices as well.

The team believed that the way forward is to strengthen weaknesses addressed by each unit and altering threats to become opportunities.

Shipping by Sea Container is the Most Environmentally Friendly Way to Transport Goods

Because a ship carries so many containers, it uses comparatively less emissions to transport a container than trucks, trains & planes. To put it in context: sending a container across the world by ship often emits less greenhouse gas emissions than getting it from the port to its final destination.

Audio Visual corner

DESTINATION FIJI

Movie Producers are electric decision makers, they base their decisions like the ebb and flow of the tide. Referrals is very important to Fiji in order to gain this business. A good experience here is what we strive to achieve for producers each time we are given the opportunity to support their logistics operations

Fiji may be geographically far from Hollywood but we have a lot going for us – besides our sun, sand and sea that Fiji is famous for we have tropical rain forests, mountains, rivers and waterfalls, modern city scapes with historic buildings, good communication links and regular shipping by both air and sea to the rest of the world. All of this coupled with an attractive 47% cash rebate offered by Government and promoted by Film Fiji makes Fiji a very attractive location.

Famous TV shows such as the Survivor series have done a few “seasons” already in Fiji and this in itself is an effective form of marketing for Fiji .



WG attends Audio Visual Show in LAX in support of Fiji’s efforts

Our attendance at the Annual AFCI Locations show in LAX together with the Fiji Delegation demonstrates our commitment to the Audio Visual industry in Fiji. We support the work of the Film Commission and the incentives Government offers. WG is doing all we can to stand behind this brilliant initiative to not only bring business to our shores, but also to boost our economy with new money and employment . Film and TV productions have the capacity to reach large audiences around the globe and promote Fiji as a destination for tourists and Investors alike.



Note other Countries showcasing their strengths and desire for more business...

Our Fiji team hard at work....

Mike and his affinity for Horns....

Williams & Gosling Scoops Air NZ Cargo Award

W&G was the overall winner at the Air New Zealand Cargo stakeholders annual awards night at Rum Bar Port Denarau Marina in Nadi .

International Freight won second place while Corporate Freight took the third spot.

The recognition awards went to TNT, Gibson Freight, TNT Express, DHL Global, DHL Express, Air Terminal Services and Carpenters Air Freight.

Air New Zealand Sales Manager Cargo for Fiji and the Pacific Islands, Scott Mitchell, said this is done to recognise the efforts and contribution of their customers - the Freight Forwarders in Fiji.”

He went on to say “Without them we would not exist. We need to recognise their efforts and what they do for us. The last ten months have been challenging for us in

Fiji after the flood in Nadi and cyclone Winston which decimated some crops and really affected the export community,.He said by rallying the Forwarders together, it helps Fiji stay in the market around the world. We look forward to the challenges ahead, we are not out of the



W&G’s Ba Office Manager

Nitya Prakash was recently appointed as a Zone Chairman for Lions Club in Fiji. Nitya recently attended Lion’s International Convention in New Zealand where he was presented with their Leadership Award by Mr. Huck Taingahue – Lion’s Island Leader. This was in recognition for his efforts in helping grow Lion’s clubs in Fiji along with the wonderful work they are doing.



Bijendra Lal Joins W&G Suva Sales

We are delighted to introduce **Mr Bijendra Lal** as Head of Sales & Marketing Suva
Prior to joining W&G, Bijendra’s work history covers twenty two years in total working consecutively with Coca Cola, Eco Lab and Mobil Oil.

What does Bijendra think of the logistics industry?
Highly competitive, fast pace, intense and interesting.

Having been on the job for only five months, Bijendra’s positive work ethic and “**Can do** “ attitude are key to moulding his team to achieve their targets.

In his spare time, (If he has any) he lists reading, travelling, socializing and cooking in his limited free time.

We welcome Bijendra to the WG family.



W&G Genera Strives for HACCP Accreditation

What is HACCP?

Hazard Analysis and Critical Control Point (HACCP) is an internationally recognized system for reducing the risk of safety hazards in food.

WG Genera does Pest Control work in 5 star hotels, and meeting and bettering the minimum safety standard is vital for winning the contract for Sofitel and the Raddisson hotels for example .

HACCP certification goes beyond compliance and sets a higher benchmark in the Pest Control Industry. We want to set a really high standard of work and safety compliance.

What does our Certification mean?

We have attained a higher level of documentation compliance and transparency of reporting and we can replicate this standard of work at other 5 star hotels in Fiji. Our business letter will carry this proud logo...



Savusavu Business Updates:

The road closure at the Kasavu slip, just out of Nausori town on the way to Natovi, put a spike in a lot of Road Haulers plans, where they transfer heavy goods between Viti Levu and the islands in the Northern Division.

This resulted in haulers making one of three choices;
-Going around the Queens Road, through the Kings road and onto Natovi a most circuitous and expensive route,
-Shipping through Suva to Savusavu and then by road to the final destination,.
-Chartering a vessel to load direct from Suva to Nabouwalu and deliver to those clients on the western side of Vanua Levu.

With help from Jerome (Projects Mgr) and our Transport Department in Suva we have been able to provide option 3 - cost effectively with great support from Patterson Shipping. It has enabled us to meet the time frames, which has pleased our clients and more importantly, ensured safe and timely deliveries.

Savusavu is excited with the seven calls that **cruise vessels** have planned for the 2017 cruising year, and this will be a much needed boost for the local economy, given that the copra industry is still to recover from the cyclone.

After a year of inactivity, **bauxite shipments** have started again, with the last shipment of 69,800 tonnes, leaving Galoa on the "Ocean Merry", in March .We look forward to more of the same in upcoming months.

As usual locals are looking forward to the **yacht cruising** period, after the cyclone season in Fiji (October to April), and we expect this activity to give an injection into the local economy.

W&G on the road to Implement Logi-Sys

WG operates in a complex local and international business arena and accurate decisions with real time information is critical. WG is on the road to move to the *Next GENERATION ERP (Enterprise Resource Planning) for Freight Forwarders.*

In the near future, we will be utilising the services of Logi-Sys an ERP system for Logistics and Supply Chain with enhanced capabilities to support Platform Independent and device independent accessibility. This feature enables our team to access and provide information on the go.

Custom Report generator, and customizable desktops enables the management to have access to real-time performance of the organization.

Automated alerts and notifications provide management information on every milestone to ensure there is no slippage in serving our customers.

In order to operate efficiently and effectively API's for connectivity with agent, Customs and Principles systems are available enabling the rapid and secure flow of information.

Enhanced with the capabilities of *Decision Support System*, Logi-Sys will surely aid our team to make timely and effective decisions to further improve our services .

Matson Partners Workshop

Participants from all over the Matson Oceania and Mainland USA congregated at the Pearl Resort, Pacific Harbor in Fiji. The Workshop had many parts to it, some of it being highly confidential and strategic to the Matson team. The aim was not only to brainstorm ideas moving forward but also to meet each other the Pacific Way...

Dave Aidney – takes over the Presidency of **Fiji Australia Business Council (FABC)**

Following the successful Joint FABC/FNZBC Forum held at the Pearl Resort on Friday 16th September '16 FABC held their AGM which saw Dave taking over the Presidency of FABC with Rajeshwar Singh (BSP) and Warwick Pleass as V.P's.

Also on FABC's **Exec Committee** are:

Viliame Leqa – immediate Past President
Dr Nur Bano Ali, Ajay Rani-ga, Mike Towler, Wylie Clarke, Godo Mueller – Teut, Kalpesh Solanki, Ajay Punja, Brett Hooker, Lisa Apted, Greg von Litzheim and Sophie McKinnon.

The Council offers members who are or wish to trade and or Invest with counterparts in Australia, a forum to discuss opportunities and or challenges which can be tackled both locally and in Australia with the support of our sister council Australia Fiji Business Council (AFBC). Regular networking functions are planned with a Post Budget Breakfast scheduled in June. Anyone wishing to become a member of FABC is encouraged to contact our Secretariat via email: [in-fo@fabc.com.fj](mailto:info@fabc.com.fj)

The largest container ship can carry over 19,000 containers



Names: Standing Front row L-R = Eric Beade (Matson HNL), Madhulesh Lakhani (W&G Ltd Fiji), Dave Aidney (W&G Ltd Fiji), Steve Rubine (Matson PHX), Palolo Pereira (Molida Shipping Samoa), Vonny Ho (ISS AUS), Sonam Devi (W&G Ltd Fiji), Alicia Pereira (Molida Shipping, Samoa) Maru Apera (Excil Shipping Cook Islands) JR. Pereira (Molida Shipping Samoa)
Back Row L-R Michael Jones (Matson SP, NZ) Len Isotoff (Matson HNL) Dean Matsuoka (Matson HNL) Salesi Kauvaka (Vava'u Shipping, Tonga) Grant Marshall (Matson SP, NZ) Laura Rascon (Matson PHX) Loa Ofa (Kingdom Shipping, Tonga) Gerry Elbourne (Matson SP, NZ) Greg Chu (Matson SP, NZ) Ann Voltas (Matson, Guam) Lanu Pen (Molida Shipping, American Samoa) Jerry Daniels (Matson PHX) Rick Eyre (W&G Ltd, Fiji) Rohitash Kumar (Matson SP, NZ)



We are surrounded by the Ocean on all sides, navigating this vast expanse is key to our survival and the people of the Pacific have this trait passed down to them. Matson is about navigating the Pacific, the seamanship and foresight are the hallmark to a great journey...our collective futures are intertwined and connected by the same Ocean....Matson and the Journey is about rowing together as a team

Customs Trainee Cadet Program

With the ongoing poaching and competitiveness for skilled and experienced Customs Agents, W&G have set up a Customs Cadet Program which is aimed at training Diploma in Customs graduates who have no work experience.

This is a two year program which gives graduates an opportunity to train and learn from our team of experienced professionals every aspect of Customs work—imports or exports.

After completion of the two years programme he graduates will have the opportunity of applying for a permanent position in the company

W&G will continue to train all our students seeking work experience in the Customs and Imports field.

Rugby Icon Michael Jones Humbled By Knighthood

All Black great Michael Jones became a hero to a generation of Kiwi kids in 1987 when his blinding speed and punishing tackles helped propel New Zealand to its first World Cup triumph.

“I am because we are,” said Sir Michael Jones humble in accepting knighthood. The All Black legend has been knighted for his work reengaging students in learning, but says he’s just part of the “big village”.

Yet, three decades on, it is the rugby hall of famer’s ability to inspire a new generation of Pacific and Maori kids off the field, which has earned him a knighthood in this year’s Queen’s Birthday honours. Chuffed with the honour, Sir Michael has been recognised for setting up community trusts and even a high school, designed to help Pacific kids in New Zealand complete their education and achieve their goals.

The former west Auckland Kiwi Samoan boy says the idea is to show Pacific kids they have support and are part of a wider team. “It takes a village to raise a child,” he tells NZ Newswire at the Pacific Advance Senior School he helped establish in Otahuhu in south Auckland.

“I’m a product of a village. My father passed away when I was four years old and I was raised by my mother and aunties and uncles and my older siblings in a small house in west Auckland.”

“We didn’t have much, we struggled financially, but I was rich in terms of the people around me.” The sense of belonging to a village or community can sadly be a feeling that is hard to find for some of the troubled youth Sir Michael’s groups, including the Village Community and Youth Trust and Pacific Advance Senior School, aim to help. Some of the teens are at risk of dropping out of school and falling into gang activity. To connect with them and the about 100 Pacific and Maori students it has enrolled with it, the Pacific Advance Senior School uses innovative teaching techniques and what Sir Michael calls a Pacific cultural outlook. This includes using sport and music as “hooks” to grab the student’s attention.

“Sport is such a powerful tool and we see it as a real key for us along with music,” he says.

“For whatever reason, it is in our DNA as Pacific people. We have a real passion for it.”

He says rugby taught him self confidence and resilience, with the times he was injured and feeling low just as important in building his character as the highs.

This sense of resilience and knowledge that you have a “village” of people ready to support you through hard times is a key message his team tries to thread through their programmes. “Young people when they go home to these neighbourhoods and streets, it is tough, so they have to build that into their inner core,” he says.

The aim is ultimately to “make the next generation better than us” and provide an environment for them to thrive.

But for a down-to-earth Aucklander more commonly known by his rugby nickname, “the Iceman”, will his new title of “Sir” ever feel comfortable?

**‘I’m a
product of
a village’**



Named the Iceman due to always playing to the limit and needing icepacks for his injuries, Jones is widely regarded as the most successful flanker to ever play for the All Blacks. Mr Jones was voted the third best All Black of the 20th Century, and was inducted into the International Rugby Hall of Fame 2003. (Source: Fiji SUN)

Leadership Fiji 2017

W&G's candidate to the Leadership Fiji Program is Merea Tofinga-Kumar who is a Senior Customs Agent in our Imports Department, Suva. Joining participants from various other organizations the Program aims to develop leaders and equip them with the skills and knowledge not only about good leadership but also to learn more about the nation.



“Going into the Leadership Fiji program I expected to just work on my leadership skills. What I have gained thus far is all that and more. Some of the sessions we’ve been through challenged my mental makeup, breaking down what I believed should be into the possibilities of what could be. No more “tunnel vision” for me” (Merea Tofinga-Kumar, LF 2017 Participant).

“Climate Change”

There are many articles in the dailies on this but for Dave Aidney – in his capacity as the Hon German Consul – Fiji – it wasn't until he accompanied Mr. Jochen Flasbarth – Germany's State Secretary at their Ministry for Environment, Nature & Conservation, whilst on his official visit to Fiji, that he became to realize the magnitude of the issue.

Fiji has taken on the huge responsibility to preside over COP 23, the ongoing UN Climate negotiations in Bonn in November this year.

Whilst Germany will be hosting the meeting, our Prime Minister has taken on the role as President and will be ably assisted by John Connor as the Executive Director of our COP 23 Presidency Secretariat and his team.

In the PM's words “this is by far the most important foreign policy commitment that we have ever undertaken. Not only on behalf of Fiji but the entire Pacific and every single climate – vulnerable nation in the world. So we have a mammoth task ahead of us.”

We wish the PM and his team all the best and it's great to see Fiji taking on this important role on behalf of our Pacific Island neighbours.

First WG Lady Branch Manager

Gina Pickering was appointed Branch Manager of Wailekutu in October 2016, and she has successfully settled into the role bringing about change and development .

Gina brings with her a wealth of knowledge and experience with 15 years in the Freight and Logistics industry. Her areas of expertise lie in Finance, Packing & Removals and Operations.

She had graduated with an Advanced Diploma in Total Quality Management and a Degree in Industrial Relations and Human Resources.

She has also joined our Executive Management Team (EXCOM) and we look forward to her innovative ideas and contributions to the team and organization as a whole.

We congratulate Gina on her appointment and look forward to her innovative changes .



RANSOMWARE

A GROWING THREAT

What is Ransomware?

Ransomware is a type of malware that encrypts a computer's data rendering it useless. The ransomware sender offers the decryption key for a price. The choice is to pay the ransom in hopes to recover your data, or completely start over by re-imaging the device and using your offline data backups to restore it.



WHAT DO YOU DO IF YOUR FILES ARE HELD HOSTAGE?

- ◆ Remove the computer from the network (unplug the network cable and turn off wireless) to try to prevent spreading.
- ◆ Report it to your IT Support Staff immediately to determine the next steps.
- ◆ **Should I Pay? Generally, NO.** There is no guarantee that handing over the ransom will give you access to your files and paying could make you a target for more malware.

How does Ransomware occur?

Ransomware is usually introduced through phishing emails when the “bad guys” dupe you into clicking a malicious link or opening an attachment.

PROTECT YOURSELF FROM MALWARE

Avoid clicking on links or opening attachments or emails from people you don't know or companies you don't do business with.

- ◆ Keep anti-virus and software up-to-date.
- ◆ Regularly backup your data.

Fiji as our Hub of the Pacific – survives Biosecurity protocols

Concerns were raised in March by representatives of the Ship Owners & Agents Assoc'n regarding the procedures and limitations proposed by Bio Security Authority of Fiji's in regard to transshipment cargo through Lautoka and Suva ports.

Fiji's Bio Security Authority proposed that Zoosanitary and Phytosanitary certificates would be required for all transshipment cargo containing animal and plant matter. This is not practical as these certificates are applied for by the importer at the final port of discharge and are issued by their Bio Security office there. These documents are not included in normal shipping clearances.

As a result of the efforts and co-operation of our Ministry of Trade, Fiji's Bio Security Authority has reviewed their requirements and has streamlined its transit permit conditions as per their attached notice dated 5/4/17.

We thank all those concerned for their efforts in getting this resolved so we can all continue to promote Fiji as the true Hub of the Pacific.



BIOSECURITY NOTICE:BAF AMENDS REQUIREMENTS FOR TRANSSHIPMENT AND IN-TRANSIT CONSIGNMENTS THROUGH FIJI

For Immediate Release

05 April 2017, BAF Headquarters, Suva

BAF AMENDS REQUIREMENTS FOR TRANSSHIPMENT AND IN-TRANSIT CONSIGNMENTS THROUGH FIJI

In an effort to facilitate the transfer of "transshipment" and "in-transit" regulated articles, the Biosecurity Authority of Fiji ("BAF") has streamlined its transit permit conditions for regulated articles transiting through Fiji.

For all "transshipment" and "in-transit" consignments of regulated articles, BAF requires that a transit permit application is lodged prior to the arrival of the consignment with a copy of the bill of lading and cargo manifest attached.

The "transshipment" regulated articles must meet the following additional shipping requirements:

- the regulated articles must be shipped in ISO standard pest proof shipping containers
- the consignments at Fijian seaports must have visual marking and be held in demarcated approved locations at the port

The "in-transit" regulated articles may be subjected to additional biosecurity requirements in addition to the conditions above.

BAF will continue supervising "in-transit" consignments of regulated articles.

For further clarifications do not hesitate to contact BAF Trade Facilitation & Compliance Team at BAF Headquarters on 3312512 Ext 182 or alternatively, on email: tfc@baf.com.fj

NOTICE

Important update on transhipment of animal and plant matter through Fijian ports

13th April 2017

Dear Valued Customers,

As a result of significant efforts & cooperation by the Fijian Bio-Security Authority, supported by the Fijian Government willingness to promote Fiji as the premier South Pacific shipping hub, we are pleased to announce that Zoosanitary & Phytosanitary certificates will no longer be required to accompany cargo containing Animal & Plant Matter transhipping in Fiji, with immediate effect.

Our local shipping agency in Suva & Lautoka – Transam Agencies Fiji – will be able to apply for a transhipment permit for all cargo transhipping through Fiji, without requiring this cumbersome paperwork which has caused so many issues for our shippers and consignees alike over recent months.

This very positive outcome has been reached as a result of a mutual understanding of how cargo in transhipment should be handled and will allow us to continue to work with our global and Pacific wide customer base to further grow Fiji as the premier South Pacific Shipping hub which will also facilitate the growth of Fijian made products to export markets.

We would particularly like to thank the Honourable Minister of Trade, the Permanent Secretary, the CEO's of Fiji Port Terminal, Fijian Bio Security Authority, and the Fijian Ship Owners & Agents Association for their devoted work in recent weeks to make this outcome possible for the benefit of all stakeholders.

Thank you for your continued support.

Yours sincerely,

Pacific Direct Line

PACIFIC DIRECT LINE LTD IS AGENT FOR PDL INTERNATIONAL PTE LTD, SINGAPORE

P O Box 137085, Parnell, Auckland 1151
Level One, 29 Heather Street, Parnell, Auckland New Zealand
Ph: 64 9 308 3939, email: info@pdl123.co.nz

www.PDL123.com

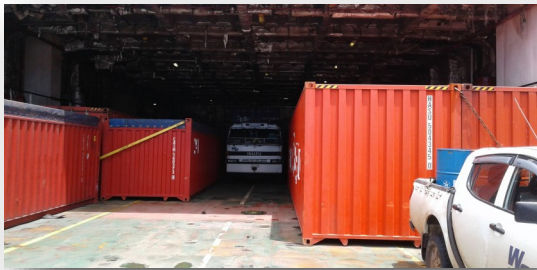
W&G's Heavy Haulage Division – ON THE MOVE

Over recent months, our Heavy Haulage specialists lead by Jerome Costello, George Niumataiwalu & Bale Leone has been kept busy helping our clients with the following moves:

Fulton Hogan's Bridge Projects – who recently had us delivering sheet piling and 15m concrete bridge beams to Ovalau.

Aurum's containers being carted to and from their Dreketi site on Vanua Levu became a challenge whilst the major slip at Kasavu was under repair.

With the support of Patterson Brothers we were able to charter their "Spirit of Love" for three voyages enabling their 40' containers to be loaded and discharged in Suva.



Fiji Electricity Authority had an urgent shipment containing a replacement valve and accessories as part of their ongoing upgrade works for their Wailoa Hydro Plant. These were shipped to Suva using PIL's new service out of Hong Kong. The timing was critical as they had to be installed over the Easter break.

The "**Max Centaur**" arrived in Suva in April with FEA's new spherical valve for Wailoa.. The items were cleared on Friday and transported to our depot at Walu Bay at 5pm where the 1x40' & 1x20' containers were unpacked and loaded onto our trucks ready for an early departure on Saturday morning. Much to FEA's relief, all the crates were safely unloaded at Wailoa by 2pm on Saturday which allowed FEA the week to prepare for installation over Easter.



CCCC FIRST HARBOUR

The Mba Delta Ironsand Magnetite Project (developed by Amex Resources Ltd) involved the services of our project team to assist in their efforts to construct a sole-use wharf, enclosed stockpile shed and export facility for magnetite concentrate next to the Lautoka Port site.

The SCL Andisa arrived on 23rd April with 4196cbm and 3147 tons of steel (shed piles, anchor piles and tie rods). Our project team was tasked to turn the vessel around quickly and safely deliver her contents to the Amex site .

With safety first, unloading of the SCL Andisa took 3 days. All personnel and cargo involved were safely accounted for in best of conditions.

Amex have a long term lease on Fiji Ports Yard in Lautoka to receive, process and export the magnetite extracted from the Ba River delta – black sand. They have started the upgrade work for this yard which saw a 4,000 tonne load of 27m to 34m steel casings arrive in with other equipment onboard a chartered vessel.

With the help of Cruz Holdings two self-propelled barges these were discharged from the vessel and barged across to their yard. W&G's trombone trailer and hydraulically steered bogie trailer were used to receive these and transport them to their holding area.

The partners we worked with to deliver this cooperated very well. It is not difficult to translate different languages when the teams comprise of skilled, well trained, and expert heavy haulage specialists.

I watched Jerome Costello and George Niumataiwalu lead a well coordinated team in delivering this complex operation on time .



Coca Cola had 34 x 40' TEU's which are due in late May. These contain plant and machinery from Krones in Germany for a major upgrade Coca Cola are doing. W&G are working in with their Agents – Logwin Air & Sea to ensure their safely arrive and are delivered to their factory according to plan.



FF&E Project – Momi Bay

FF&E - Furniture, Fixtures and Equipment, are movable furniture, fixtures or other equipment that have no permanent connection to the structure of a building.

The FF&E stage of a hotel development is a positive sign that a developer is about to deliver what he set out to do, and is a key indication to investors of the direction their investment is headed.

We are thankful to our partners who gave us the opportunity to be involved in a very important stage of development of what is now the Fiji Marriott Resort Momi Bay.

Features of the resort include 136 Deluxe rooms and 114 luxurious Bure Villas, including 22 Bure Villas overwater with direct access to the lagoon plus a range of five star facilities.



If you don't want this to happen...



leave it to the experts.

Give us a call:

Romana Andrews

P.O.Box 79, Suva

Ph: (679) 3312633

Fax: (679) 3236336

www.wgfiji.com.fj



Company letterhead

(MUST be issued by the packer or supplier of the goods and MUST include the company's name AND address)

PACKING DECLARATION

Vessel name:..... **Voyage number:**.....

Consignment identifier or numerical link.....

UNACCEPTABLE PACKAGING MATERIAL STATEMENT

(Packaging material such as straw, bamboo, peat, hay, chaff, used fruit & vegetable cartons are not permitted)

Q1 Have unacceptable packaging materials or bamboo products been used as packaging or dunnage in the consignment covered by this document?

A1 YES NO

TIMBER PACKAGING/DUNNAGE STATEMENT

(Timber packaging/dunnage includes: crates, cases, pallets, skids, and any other timber used as a shipping aid)

Q2a Has solid timber packaging/dunnage been used in consignments covered by this document?

A2a YES NO

TREATMENT CERTIFICATION (ONLY IF TIMBER/DUNNAGE IS DECLARED IN QUESTION 2)

Q3 All timber packaging/dunnage used in the consignment has been (Please Indicate below)

Treated and marked in compliance with ISPM 15

Or

Treated in compliance with Department of Agriculture and Water Resources treatment requirements

(With accompanying treatment certificate)

Or

Not treated

CONTAINER CLEANLINESS STATEMENT (for FCL/X consignments only - statement to be removed from document when not relevant)

The container(s) covered by this document has/have been cleaned and is/are free from material of animal and/or plant origin and soil.

Signed: Printed name:.....
(Company representative)

Date of issue:.....
(DD/MM/YYYY)

Records Management Service

The goal of records management is to help an organization keep the necessary documentation accessible for both business operations and compliance audits. In some small to mid-sized businesses, spreadsheets are used to track where records are stored, but larger organizations may find records management software suites that are tied to both a taxonomy and a records retention schedule to be more useful. Such software suites may be marketed as enterprise information management (EIM) products that are capable of helping an organization to manage both records and ordinary content.

We at Williams and Gosling have been over the years improved on our processes and systems regarding Records Management for our clients as a service to maintaining their different forms of records. We have acquired a world renowned software from a well established company called Oneil's software to be able to manage company records as such.

O'Neil has been committed to leading the record storage and management industry for over 30 years. They have an enviable track record of installations in over 1000 record centres, operating in more than 80 countries, from start-ups to multi-nationals. Their record storage and management software solutions track multiple types of data including traditional storage boxes, file folders, documents and tapes; from deposit to destruction, work order to invoice.

O'Neil is also known as the industry pioneer for barcode tracking, wireless handhelds and web technology. Our record storage and management software products consistently offer enhancements and new features not found anywhere else.



Obituaries

Gone but not forgotten.....we remember our colleagues who have passed on



- ◆ Tevita Waqa (Shipping)
- ◆ Muhammed Muneer (Air Freight)
- ◆ Isoa Mitchell (Customs)
- ◆ Hazrat Mohammed (Transport)
- ◆ Tunu Gaunavou (Transport)

May their Souls Rest in Peace!



WILLIAMS & GOSLING LTD
Container Sales & Leasing



Contact Details
Melanie Dean
Email: melanied@wgfiji.com.fj
Phone: 3312 633

Business House Netball

The W&G Mixed Netball team participated at the Suva Business House Netball Tournament and they have reached the quarterfinals knockout stage which is a big achievement for the team.

The team consisted of both male and female staff and was surely a test of endurance, speed and team work, considering the limited time given for preparations towards the event.

A Big Vinaka Vakalevu to the company for their support and to Mr. & Mrs. Vosaicake and family for their sponsorship of sporting equipment.

We wish the team all the best in their future games and looking forward to a big and better competition next year!



WG Silver Sponsors for Multiple Oceania Table Tennis events

This message from the organizers ;

Thank you very much WG for coming on board as one of our Silver Sponsors for the multiple Oceania events that was held at the Vodafone Arena in April.

The event was hailed a major success by the International Table Tennis Federation President and the Oceania Table Tennis President and a number of its executives who were all present to witness the quality of the presentation of the event, the hospitality provided , the daily TV Broadcasts and live streaming overseas , the daily media coverage and the great support from the corporate sector, volunteers and officials.

They concluded the event was far better than any other table tennis event ever hosted in the Oceania region and had the largest number of table tennis participants in a Oceania event.

So thank you and W&G for the great support and we look forward to your support in the upcoming World event, called the 2017 World Cadet Challenge involving the best U15 players from the 6 continents that we will be hosting at the Vodafone Arena and FMF Gymnasium in October.

We also have been advised that W&G has some good 20 foot containers which we could purchase for Fiji Table Tennis at a discounted price to store the equipment that was brought in recently. We intend to have Lambert Ho put up some murals on these containers regarding our

marine life, climate change etc. and if you wish we could also promote your company and table tennis on these containers.

WG
WILLIAMS & GOSLING Ltd.

Logistics & Supply Chain Professional For Over 75 Years

- Warehousing & Distribution
- Project Management
- Audio Visual Logistics
- Courier Service
- Shipping Agent
- Customs Brokers
- Document Management
- Transport (Heavy & General)
- Household & Office Removals
- Air & Sea Import & Export

WILLIAMS & GOSLING LTD

www.wgfiji.com.fj

Phone: (679) 3312 633

Email: info@wgfiji.com.fj

Approximately 675 shipping containers are lost at sea each year



Excess baggage made easy
with



**Williams & Gosling Ltd Bradfield Drive Nadi Airport
Phone 6722855 Mobile 7080577**

WILLIAMS & GOSLING LTD.



SUVA HEAD OFFICE
P.O. BOX 79, SUVA
PH: (679) 3312 633
FAX: (679) 3236 336

NADI AIRPORT OFFICE
P.O. BOX 9414, NADI AIRPORT
PH: (679) 6722 855
FAX: (679) 6735 730

LAUTOKA OFFICE
P.O. BOX 226, LAUTOKA
PH: (679) 6664 093
FAX: (679) 6665 844

BA OFFICE
P.O. BOX 226, LAUTOKA
PH: (679) 6673 102
FAX: (679) 6673 701

SAVUSAVU OFFICE
P.O. BOX 850, SAVUSAVU
PH: (679) 8853 007
FAX: (679) 8853 002

Enquiries: info@wgfiji.com.fj